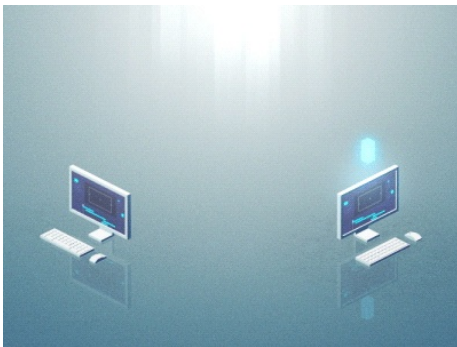


Quality and Training Tips 06/20/2025

Last Modified on 06/20/2025 10:31 am EDT

QUALITY AND TRAINING TIPS

FRIENDLY
REMINDER



Transition from Merge to eRAD:

- The first 6 sites are now live!
 - We only have Chevy Chase and Fairfax left in Merge!
 - By 6/25/25, **ALL** sites will be in eRAD **only**!!
 - We are still in the process of updating the job aids, thank you so much for your patience.



K Street/19th Street Relocation:

- Screening Mammography services will move to **1145 19th ST NW** as of **06/23/25**

- ALL other services will remain at K Street until later this year
 - We will keep you posted on official date once determined
- Please take into consideration when scheduling multiple exams on the same- day in DC,
 - It is a 6-minute drive



- Or, if walking, 10 minutes



- We do **not** validate parking at either location.
 - There is paid parking at both locations (we do not have the details for 19th Street yet)
 - To be paid by patient:
 - Early Bird (in by 8:30 am and out by 2 pm) - \$14
 - Up to 1 hour - \$12
 - Up to 2 hours - \$18
 - Beyond 2 hours - \$21
 - <https://washington-radiology-contact-center.knowledgeowl.com/help/wr---dc---washington---k-street>

PUBLISHED: 06/20/2025
